

Window Guard

The new Keylite Window Guard is designed for vertical windows to support housebuilders needing to meet the latest update to the building regulations.



Features

- ▶ **Durability** - Manufactured from extremely durable materials, and completed with a timeless chrome finish the Window Guards are designed by Keylite to last, ensuring a long-term solution towards the safety of the users of the property and preventing them from potential falls from height.
- ▶ **Ease of Installation** - Every Keylite Window Guard can be fixed to the internal window reveals using the two end brackets that are supplied with the product as standard. Each bracket requires three fixings and these fixings can be mounted to a range of materials and surfaces for quick and easy installation.
- ▶ **Certified** - Keylite's Window Guard has been structurally tested to carry the required uniformly distributed load across a range of typical installation scenarios by a UKAS approved testing facility.
- ▶ **Flexibility** - Available in four standard sizes which can then be adjusted on site to suit the specific openings created, offers our customers the greatest flexibility on the market.

Application

- ▶ Keylite Window Guards can be applied directly to Plasterboard internal linings that have been bonded to either; timber frame construction, aggregate Blockwork, autoclaved aerated concrete (AAC) blockwork, or even on clay bricks.
- ▶ It must be positioned along the horizontal plane so that a 100mm sphere cannot pass between the Window Guard and the bottom of the finished window reveal.

Operation

- ▶ The Keylite Window Guard is designed to be stationary when installed.

Guarantee

- ▶ **3 Years** - Keylite's hassle free guarantee on accessories.

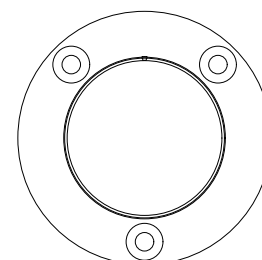
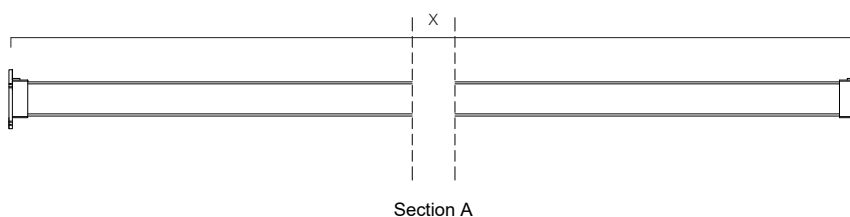
Finish Options

- ▶ **Chrome**

Size Range

Code	KWG 950	KWG 1400	KWG 1600	KWG 1900
Length (x)	950mm	1400mm	1600mm	1900mm

Cross Section



GB

Unit 3 Gateway Road, Burton Gateway,
Burton upon Trent, DE13 8FL

T: +44 (0) 1283 200 158
E: info@keyliteuk.com

NI & ROI

KG2, Ballyreagh Industrial Est. Sandholes
Road, Cookstown, Co. Tyrone, BT80 9DG

T: +44 (0) 28 8675 8921
E: info@keylite.co.uk